



~~BORDERS~~  
~~BOUNDARIES~~  
REBELLION

PPHX | LINE TWO



FFIN  
E Y E W E A R

DESIGNED IN WALES  
& MADE IN ITALY

FOR THE REBELLIOUS  
AR GYFER Y GWRTHRYFELGAR  
PER I RIBELLI  
PARA LOS REBELDES  
POUR LES REBELLES  
FÜR DIE AUFSÄSSIGEN  
GIA TOUS EPANASTÁTES  
ZA BUNTOVNITSITE  
ZA POBUNJENIKE  
PRO VZPURNÉ  
TIL DE OPRØRSKE  
VOOR DE OPSTANDIGE  
MÄSSULISTELE  
KAPINALLISILLE  
A LÁZADÓKNAK  
DO NA HAGHAIDH ÉIRÍ AMACH  
PANHANGJEOG-IN SALAMDEUL-EUL WIHAE  
AR DUMPINIEKIEM  
UŽ MAIŠTININKUS  
GHALL-RABBLIČI  
DLA BUNTOWNIKÓW  
PARA OS REBELDES  
HANGYAKU-SHA NI TOTTE WA  
DUÌYÚ PÀNNÌ ZHĚ LÁI SHUŌ  
PENTRU REBELII  
PRE REBELOV  
ZA UPORNIKE  
FÖR DE REBELLISKA  
VIR DIE REBELSE  
NAM REBELLIS

**New Collection**

Made from  
{Bioacetate}



E

PAST PRESENT & FUTURE  
CONVERGE

{ ERA }

TIMELINES

{ ERA }

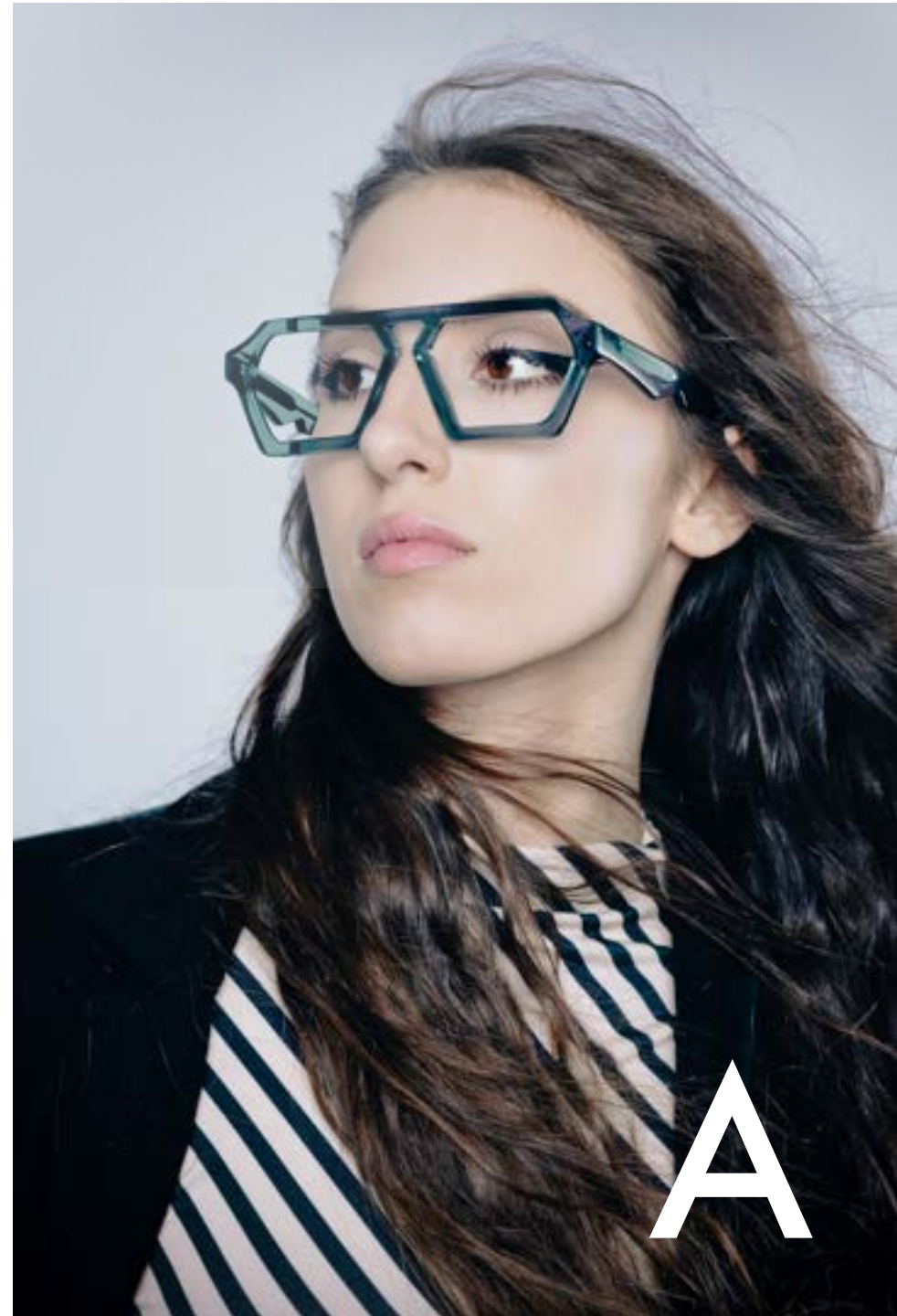
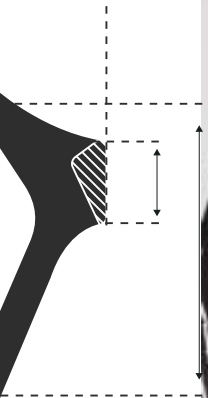
TIMELINES

CONVERGE

{ ERA }

R

A



{ ERA } Timeline

{ ERA } Taimu rain  
{ ERA } Idővonal

{ ERA } Llinell Amser  
{ ERA } Chronologie

{ ERA } Zeitlinie

{ ERA } Línea de tiempo

{ ERA } Linha temporal  
{ ERA } Linha do tempo  
{ ERA } Tijdslijn

{ ERA } Tidslinje  
{ ERA } Aikajana

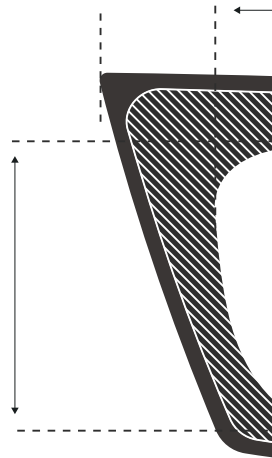
{ ERA } Shijīān xiàn

{ ERA } Chronologia

{ ERA } Linia czasowa

{ ERA } Časová osa  
{ ERA } Vremenska crta





{ IFF }

IFF AND ONLY IFF  
WHERE DO YOU DRAW THE LINE?

{ IFF }

CREAT I VITY

CUR I OSITY

INDIV I DUALITY

REBELL I ON

CONF I DENCE

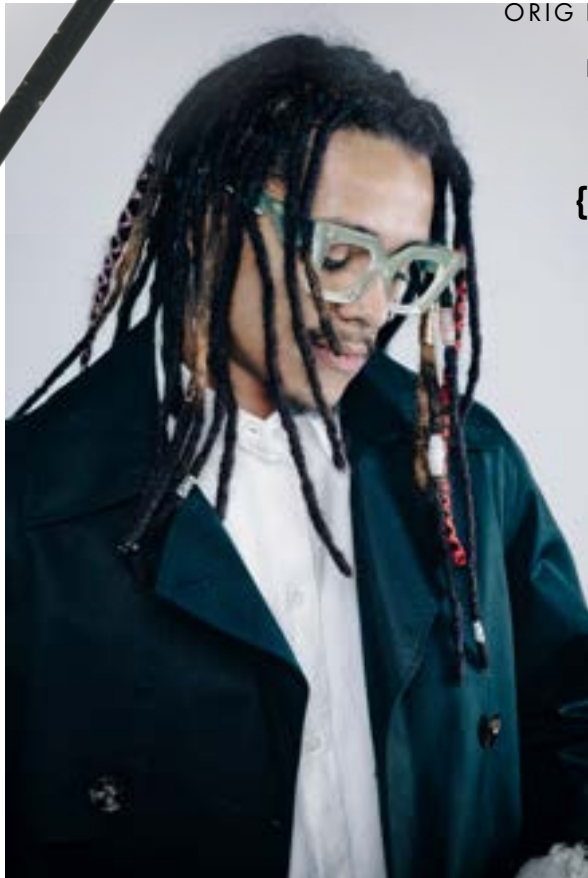
INCLUS I VITY

SUSTA I NABILITY

ORIG I NALITY

I CONS

{ I F F }







E

{ AER }

R

R

WELSH FOR AIR

A



R

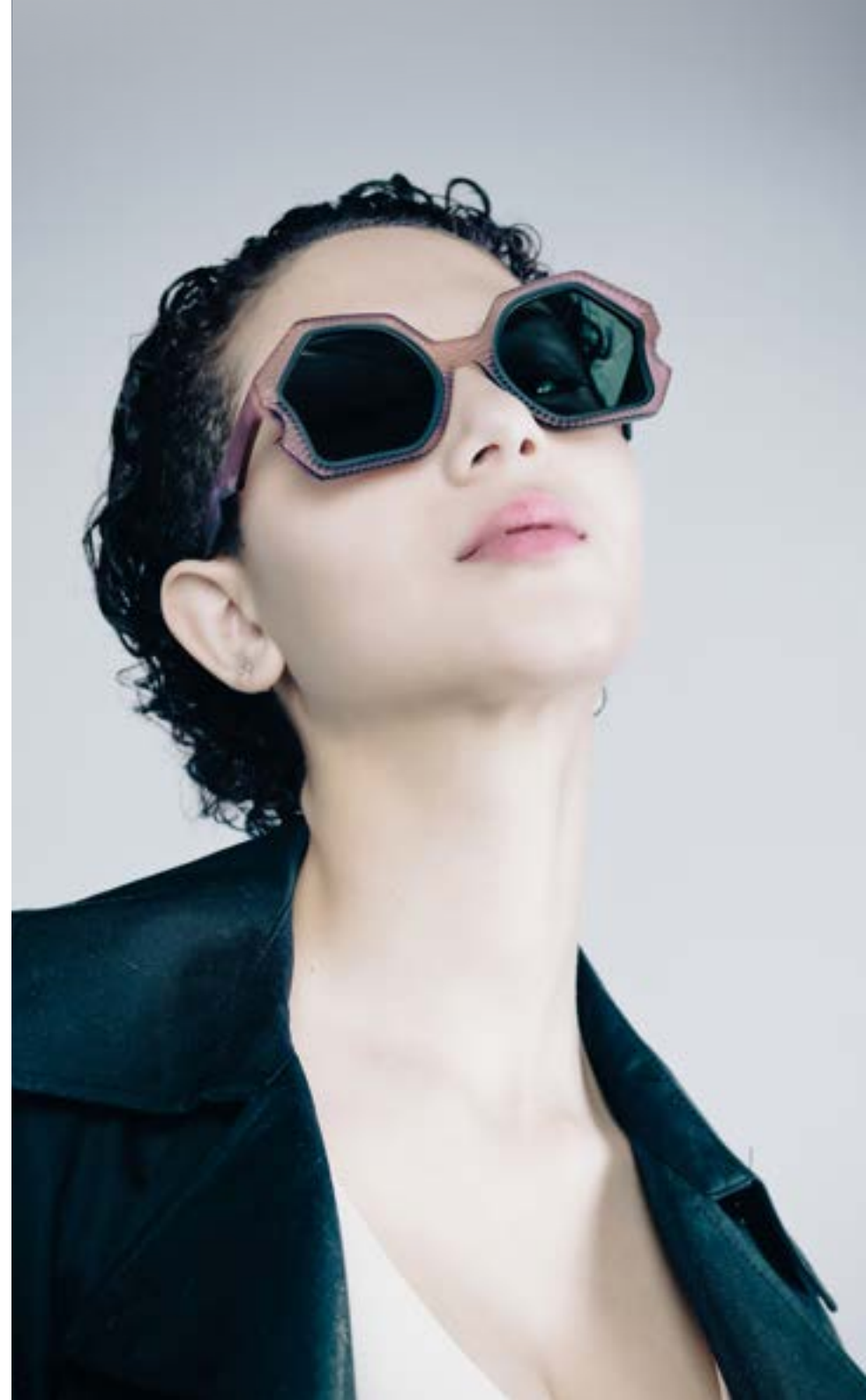




QUIETLY

{ AER }

REBELLING



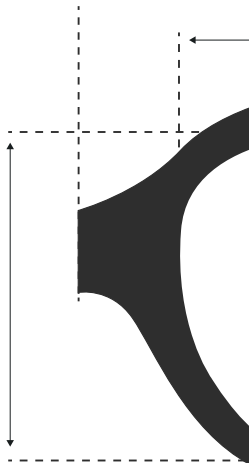


BOLD INDIVIDUALITY

BOLD INDIVIDUALITY

BOLD INDIVIDUALITY  
BOLD INDIVIDUALITY

{ ANA }





REDEFINING

REDEFINING TRADITION

REDEFINING  
TRADITION

{ ANA }







N

WELSH FOR  
NIGHT

A PERIOD OF DARKNESS

{ NOS }

O

A PERIOD OF DARKNESS  
IN 24 HOURS

WELSH FOR NIGHT



IN 24 HOURS

S



O

R

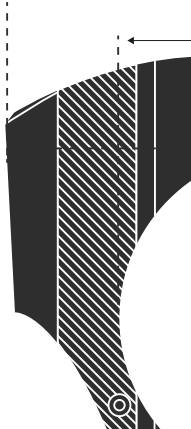


A

AT THE EDGE OF  
INN OVATION  
EXPL O RING  
O PTIMISM  
DISC O VERY  
O PENNESS  
B O LDNESS  
J O Y

{ ORA }

(LATIN FOR EDGE)



Ffin is a Welsh word that translates into border, boundary or frontier. The brand ethos is all about these defining lines, at the very edge of things. The lines we cross be they real or imaginary, tangible or invisible. There is always a hint of rebellion here, for wearers with a little bit of an edge. They are created for the adventurous spirits, the outsiders, the creative souls that are walking their own path in the world. For people that skirt the rules of the status quo, eyewear for the individual, classic with a wink.

F O R T H E  
T R O U B L E  
M A K E R S



@ffineyewear

To go beyond;  
the boundary, the  
border, the lines, the  
edges, the limits, the  
seasons. Crossing  
all the lines.



DISTURB  
REALIGN

EDGE

Our product and brand emphasises sustainability throughout. The choice of ethical eco-friendly practices at every level is key to the way we work. This includes the frame, lens, packaging, shipping and the people in the process.

COLLIDE

LINE

FRONTIER

BRINK

BEYOND

**Frames:**

Mazzucchelli M49 Bio-Acetate

**Lens:**

Shades – Diver Green Line (40% vegetable origin, 60% recycled );  
Optical - Fully recyclable blanks

**Case:**

Recyclable metal with organic fabric cover, recycled rPET interior

**Accessories:**

Organic fabric pouch,  
recycled rPET lens cloth

**Packaging:**

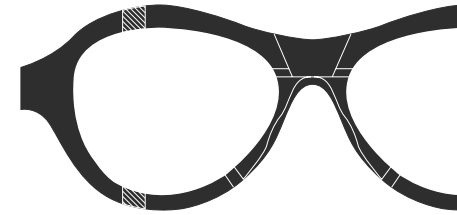
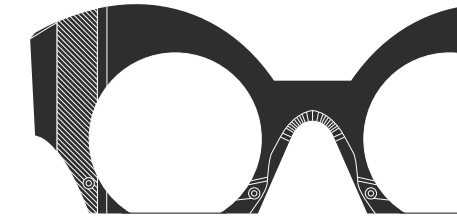
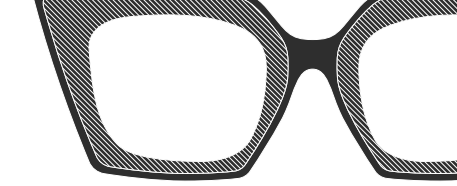
FSC, recycled materials,  
eco printing

**Shipping:**

Environmentally conscious options

**People:**

Treated ethically





FFH



T H E R E  
A R E  
L I N E S  
T O B E  
~~C R O S S E D~~

WWW.FFINEYEWEAR.COM

FFIN