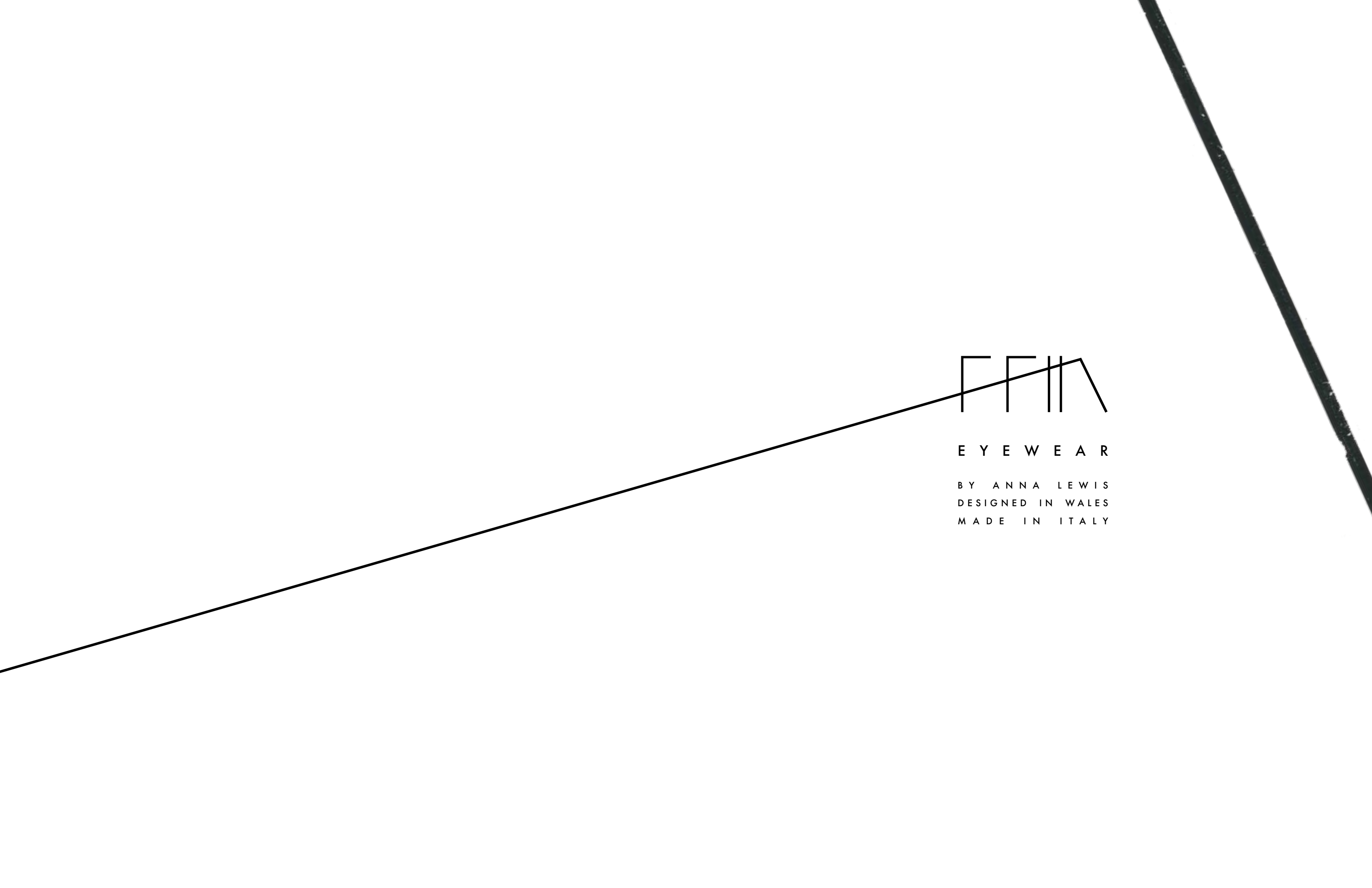


~~BORDERS~~
~~BOUNDARIES~~
REBELLION

FFM | LINE ONE



FFIN

E Y E W E A R

BY ANNA LEWIS
DESIGNED IN WALES
MADE IN ITALY



A

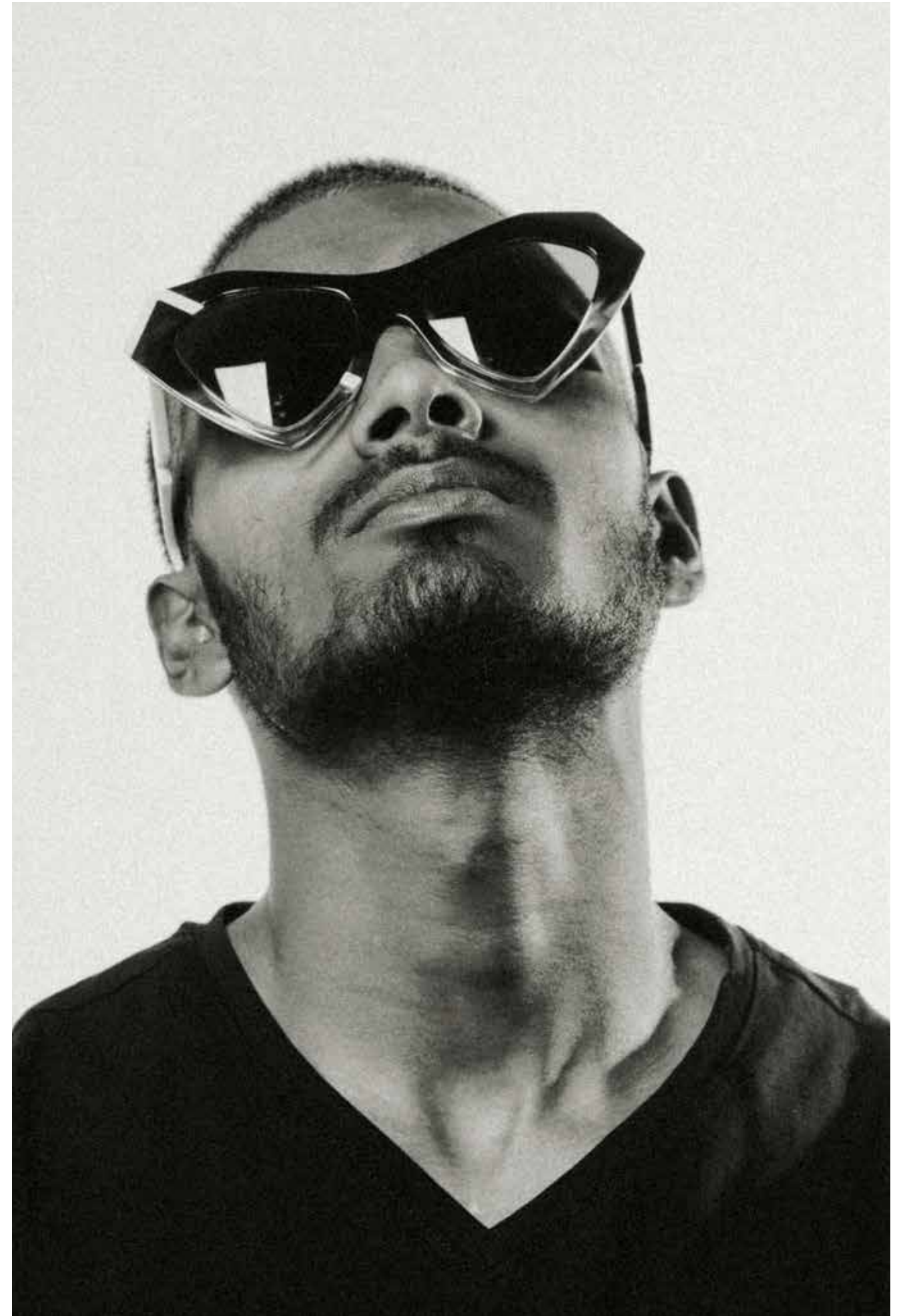
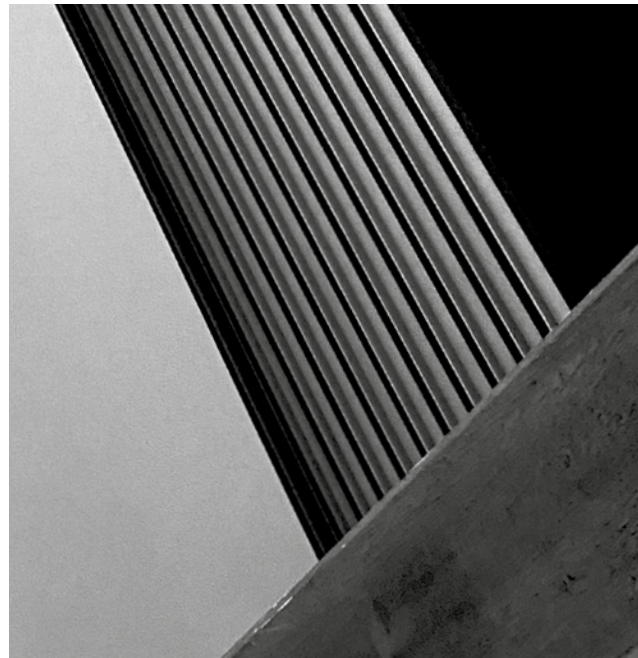
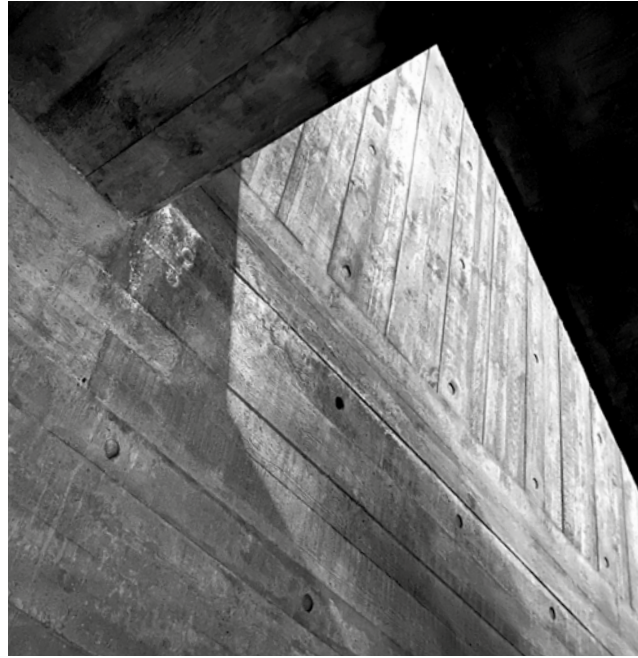
T W I S T

O F

REBELLION

Ffin is an independent new eyewear brand designed by artist and designer Anna Lewis, the new range of sunglasses are designed in Wales and handmade in Italy from the best Italian bio acetate.

Ffin translates in Welsh as 'frontier' 'border' or 'boundary'. Our ethos is about traversing borders be they imagined or real. We design for the individual, for a wearer with edge, a creative curious and adventurous spirit with a twist of rebellion.





R

E

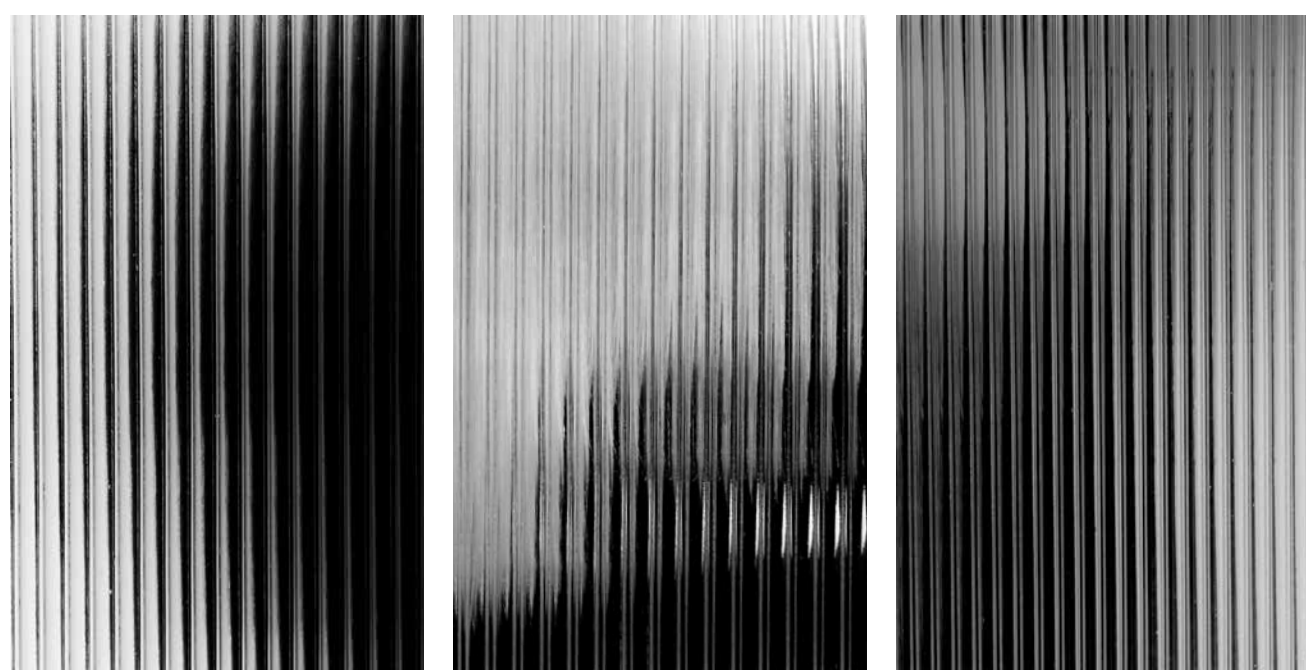
V

E

A

L

REVEAL



E



G



F

ORA

Definition

The edge.
At the edge of Light.
At the edge of darkness.





the period of darkness in 24 hours
the period of darkness in 24 hours
the period of darkness in 24 hours
the period of darkness in 24 hours
the period of darkness in 24 hours
the period of darkness in 24 hours

the period of darkness in 24 hours
NOS the period of darkness in 24 hours
the period of darkness in 24 hours
the period of darkness in 24 hours

Definition the period of darkness in 24 hours

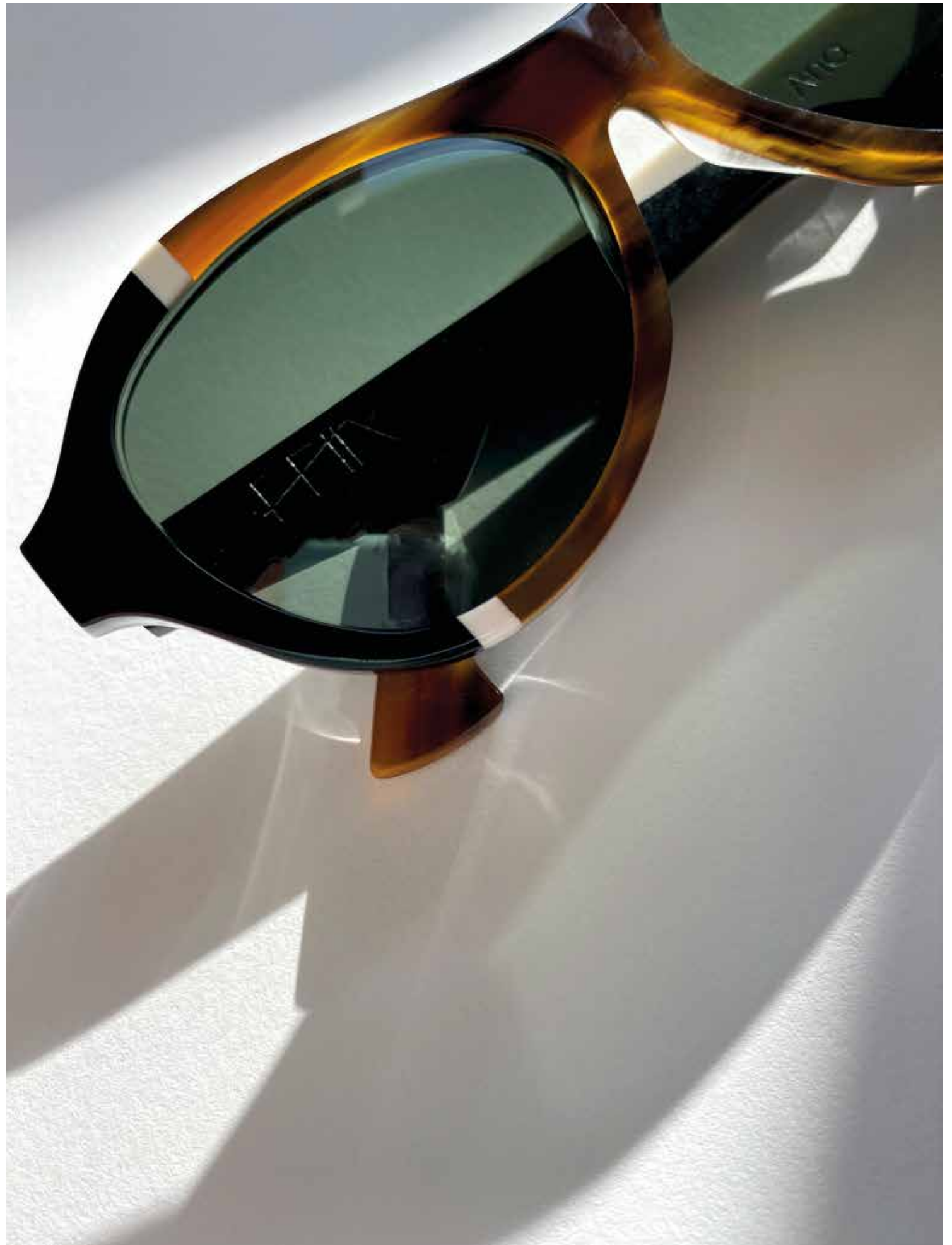


F O R
T H E



ANA

INDIVIDUAL

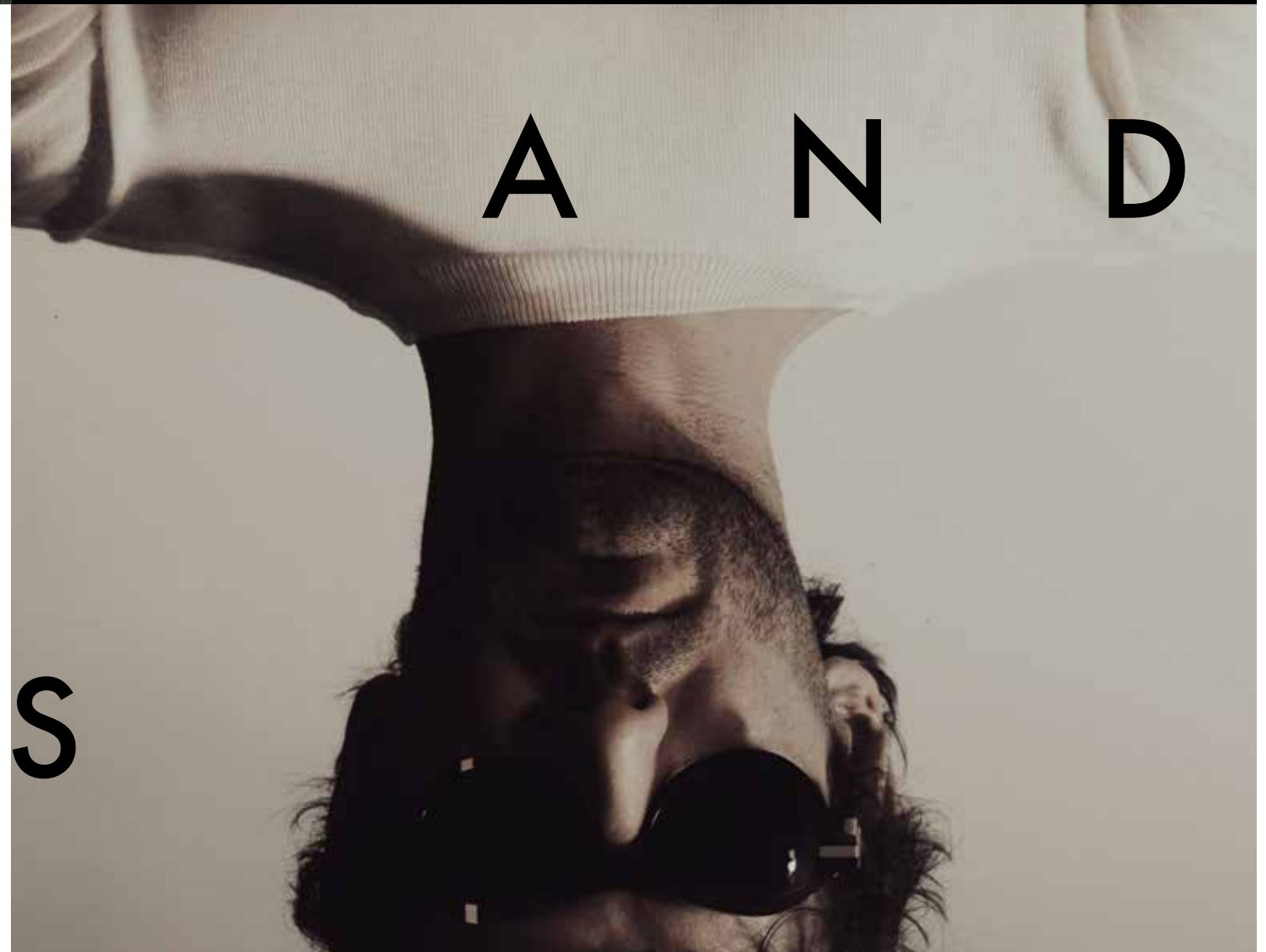


between light and dark
between light and dark
between light and dark
between light and dark
between light and dark
between light and dark
between light and dark
between light and dark
between light and dark
between light and dark
between light and dark

O R D E R

A N D

C H A O S





I
COGN
NITD

T H E R E
A R E
L I N E S
T O B E
~~C R O S S E D~~

WWW.FFINEYEWEAR.COM