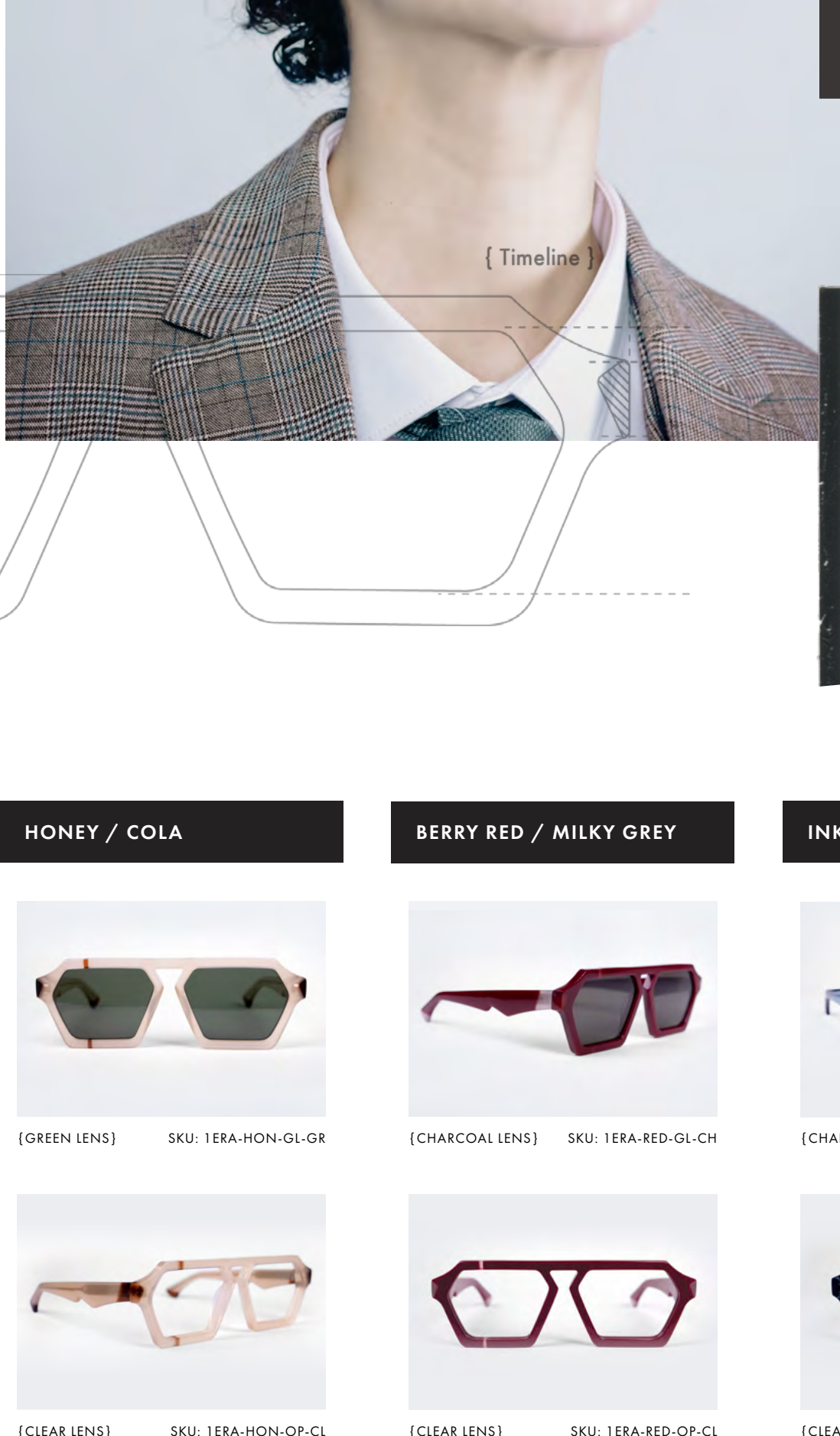


{ ERA }



INSPIRATION
ERA represents a timeline. The inspiration looks back to the 70's (and the spectacles of British icons like Michael Caine) and then is distorted, faceted and assembled with a Fin twist that translates to the future. The modern angular shape, with signature Fin edges and asymmetrical laminated details on the front, corners and lips, gives this frame broad appeal and complements a range of different face shapes.

MATERIALS
Mazzucchelli MAP Bio-Acetate. Cellulose acetate and a plasticizer of vegetable origin.

LENSES
Dive! Green Line Sun Lens (60% recycled plastic, 40% organic material) with anti-reflective inner film, UV 400 protection Cat 3. Recyclable nylon optical blanks.

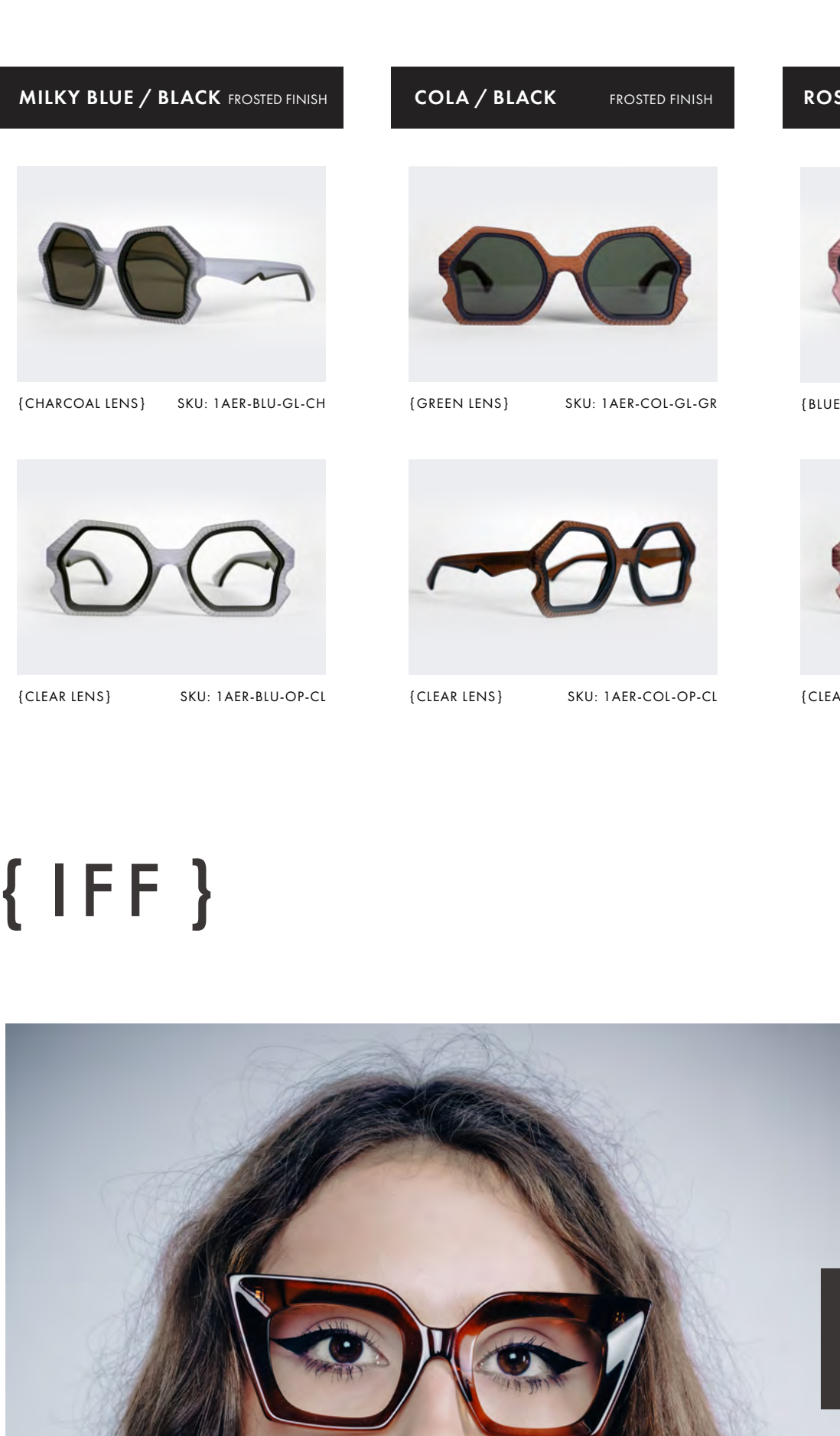
DETAILS
7-barrel hinge. Silver metal hardware. Cross laminated details.

MEASUREMENTS
Base 4 curve, frame width 145mm, frame height 48mm, temple 138mm, DBI 24, thickness 6mm

{ VARIATIONS }



{ AER }



INSPIRATION
AER is the Welsh word for air. An invisible but powerful element all around us, the effects of which can only be seen when it interacts with things in our environment: the curved lines across the acetate reflect the windswept sand lines of the beach edge. This frame stands apart from the rest but is gently tethered to the Fin family of designs with signature notes of line, with cross lamination around the lens and detailed along the temple.

MATERIALS
Mazzucchelli MAP Bio-Acetate. Cellulose acetate and a plasticizer of vegetable origin. All have a frosted-powdered finish.

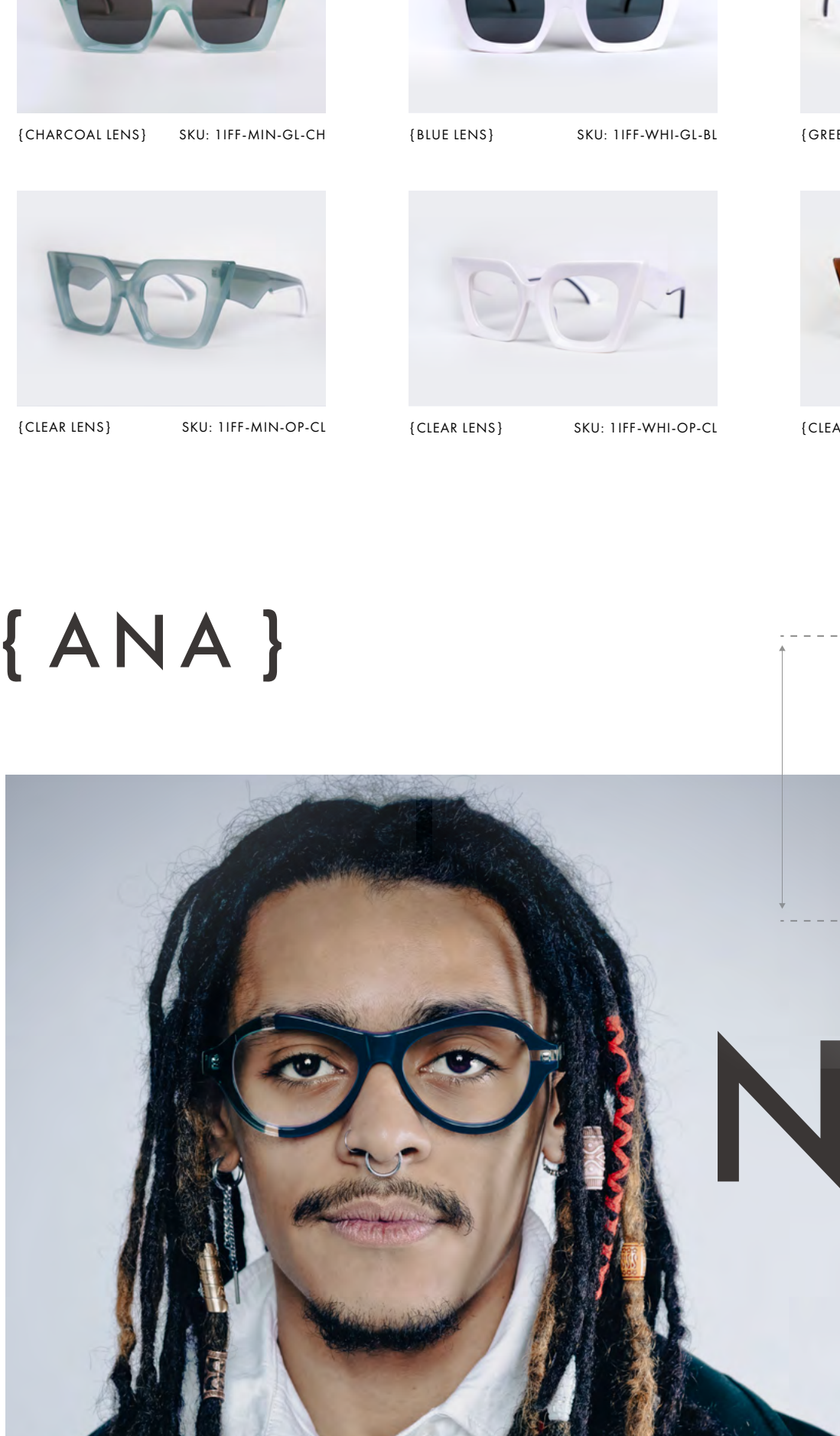
LENSES
Dive! Green Line Sun Lens (60% recycled plastic, 40% organic material) with anti-reflective inner film, UV 400 protection Cat 3. Recyclable nylon optical blanks.

DETAILS
7-barrel hinge. Silver metal hardware. Cross laminated details.

MEASUREMENTS
Base 4 curve, frame width 145mm, frame height 52mm, temple 138mm, DBI 22, thickness 6mm



{ IFF }



INSPIRATION
Strong features elevate the face with a bold impact. IFF is the abbreviation of "IF and only IF", which in mathematics and philosophy is a biconditional logical connective between two statements, where both statements can be true or both can be false. Allowing us to constantly challenge the reason of the world around them. Inspired by a vintage cat eye and deep framed 60's television sets, there is a chunky inverse curve to the cut out, giving a deep sculptured feel, off-set by subtle laminated line detail on the temples.

MATERIALS
Mazzucchelli MAP Bio-Acetate. Cellulose acetate and a plasticizer of vegetable origin.

LENSES
Dive! Green Line Sun Lens (60% recycled plastic, 40% organic material) with anti-reflective inner film, UV 400 protection Cat 3. Recyclable nylon optical blanks.

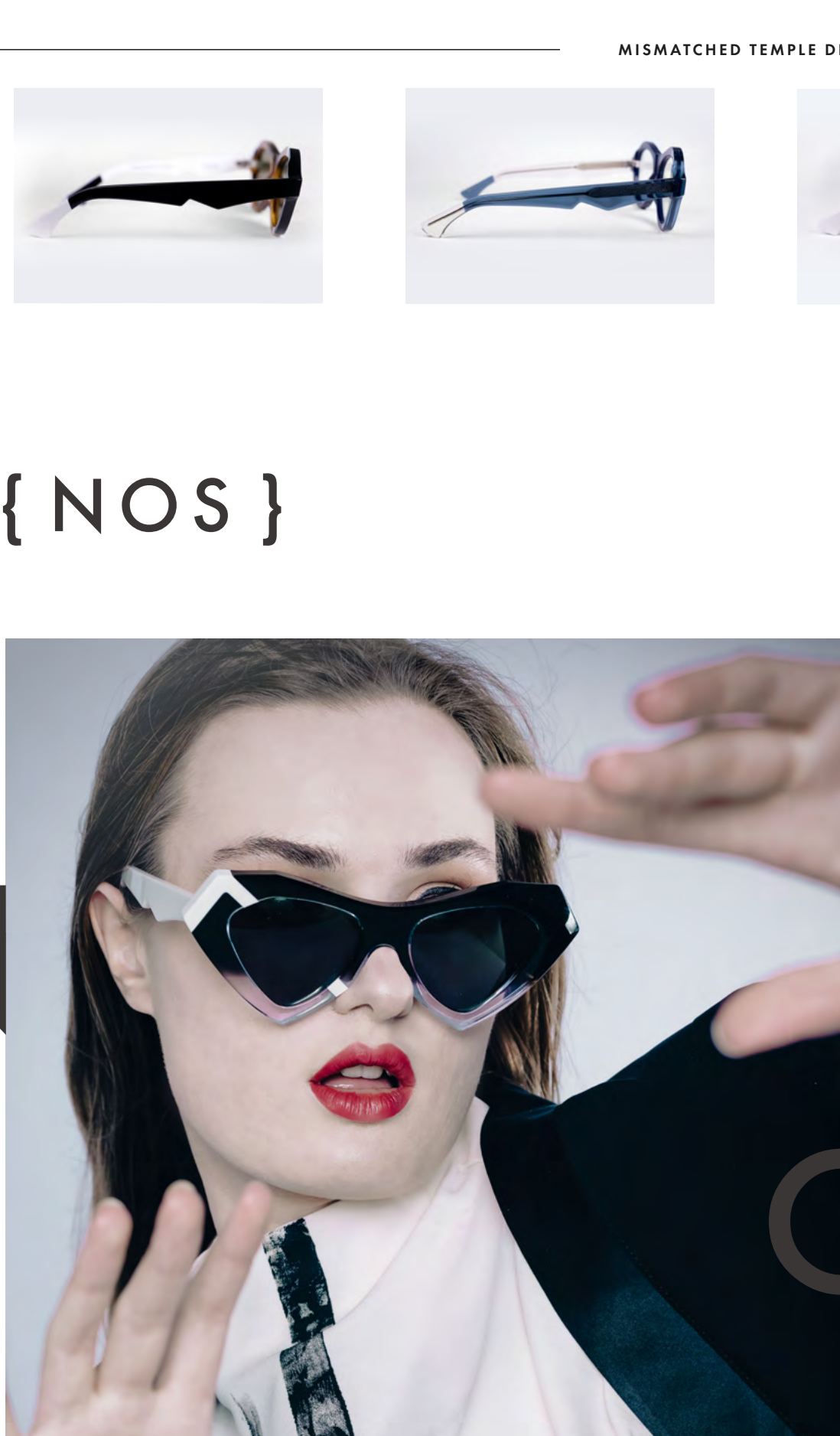
DETAILS
7-barrel hinge. Silver metal hardware. Cross laminated details.

MEASUREMENTS
Base 4 curve, frame width 160mm, frame height 52mm, temple 138mm, DBI 22, thickness 6mm

{ VARIATIONS }



{ ANA }



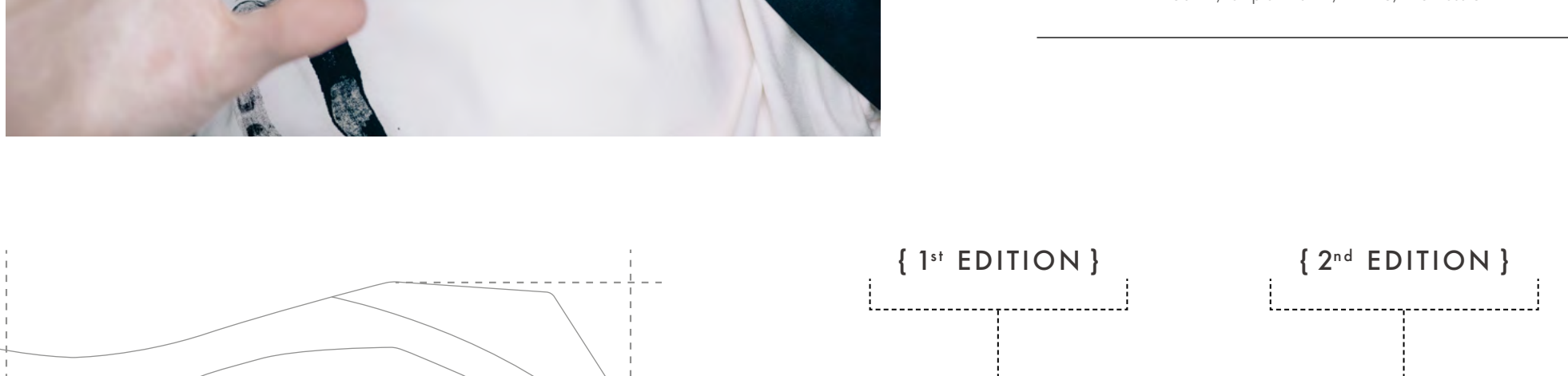
INSPIRATION
ANA is our signature award winning frame. Inspired by a 40's vintage aviator reimagined with unique asymmetrical linear details and mismatched temples. Due to its popularity, both as sunglasses and optical, we have introduced new colourways that each tell a story of their own. Although one of our more subtle designs, the frames attract comment wherever they are worn.

MATERIALS
Mazzucchelli MAP Bio-Acetate. Cellulose acetate and a plasticizer of vegetable origin.

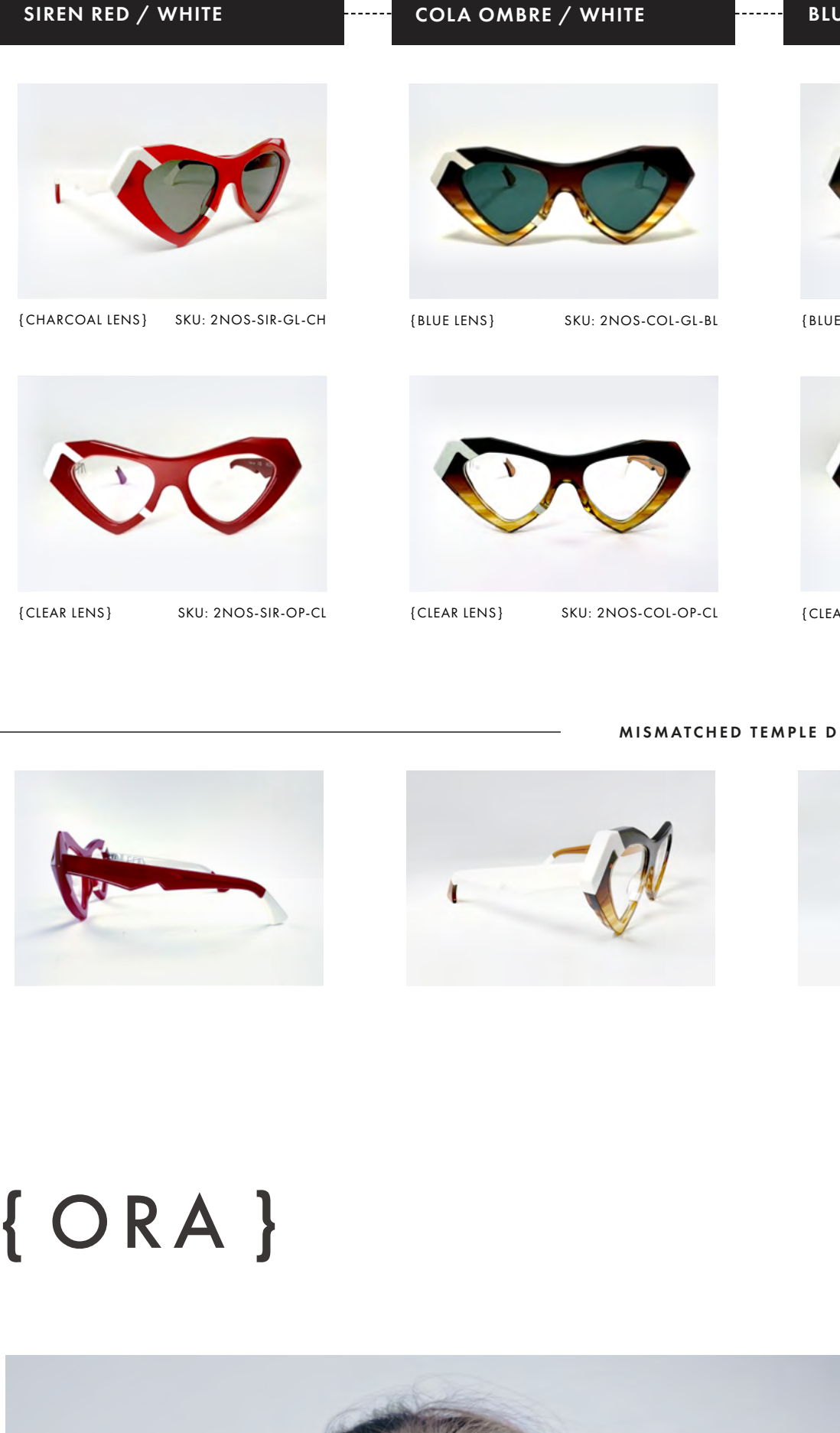
LENSES
Dive! Green Line Sun Lens (60% recycled plastic, 40% organic material) with anti-reflective inner film, UV 400 protection Cat 3. Recyclable nylon optical blanks.

DETAILS
7-barrel hinge. Silver metal hardware. Cross laminated details.

MEASUREMENTS
Base 4 curve, frame width 147mm, frame height 44mm, temple 138mm, DBI 17.5, thickness 6mm



{ NOS }



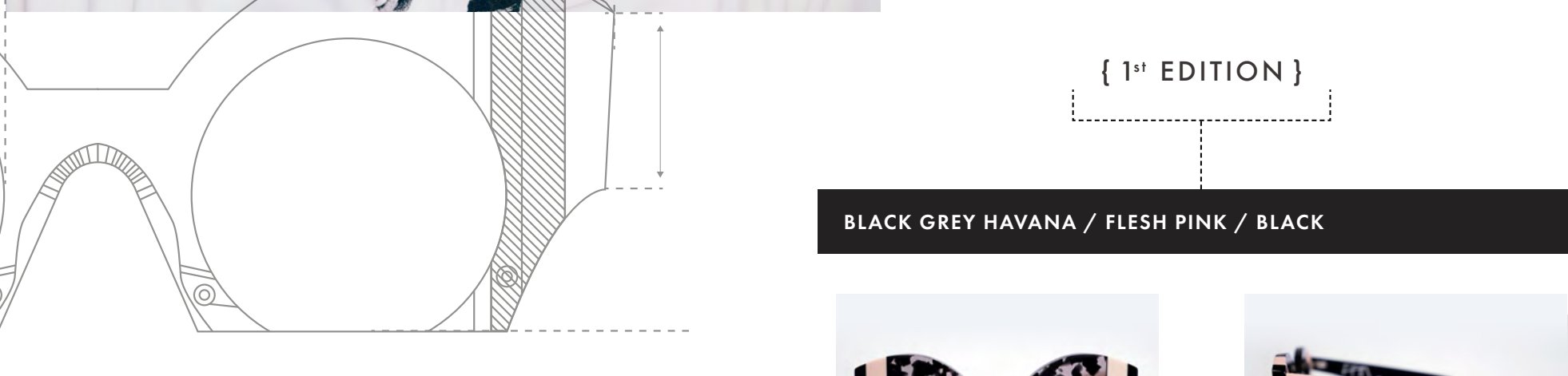
INSPIRATION
NOS is the Welsh word for night. This dramatic vintage cat eye has faceted jewel like details and fades from darkness to light, with lightening edge detail. This bold oversized frame demands attention and we have had global demand for more of the same. Soon to be available in additional colourways.

MATERIALS
Mazzucchelli MAP Bio-Acetate. Cellulose acetate and a plasticizer of vegetable origin.

LENSES
Dive! Green Line Sun Lens (60% recycled plastic, 40% organic material) with anti-reflective inner film, UV 400 protection Cat 3. Recyclable nylon optical blanks.

DETAILS
5-barrel hinge. Silver metal hardware. Cross laminated details.

MEASUREMENTS
Base 0 curve, frame width 158mm, frame height 60mm, temple 140mm, DBI 18, thickness 6mm



{ ORA }



INSPIRATION
ORA is Latin for Edge. The dramatic curved round frames with cross laminated lines, cut off base lenses and mismatched temples. This frame has more nice appeal but for some people when they see it the reaction is visceral: they must have it! We recommend this design in sunglasses only.

MATERIALS
Mazzucchelli MAP Bio-Acetate. Cellulose acetate and a plasticizer of vegetable origin.

LENSES
Dive! Green Line Sun Lens (60% recycled plastic, 40% organic material) with anti-reflective inner film, UV 400 protection Cat 3. Recyclable nylon optical blanks.

DETAILS
5-barrel hinge. Silver metal hardware. Cross laminated details.

MEASUREMENTS
Base 0 curve, frame width 143mm, frame height 53mm, temple 140mm, DBI 25, thickness 6mm

{ OUR PACKAGING }

BLACK, NEUTRAL, WHITE
Included with each frame as standard

Case:
Recyclable metal with organic calico cover, recycled-PET interior

Accessories:
Organic pouch, recycled-PET lens cloth

Packaging:
FSC, recycled materials, eco printing