



~~BORDERS~~
~~BOUNDARIES~~
REBELLION

PPHX | LINE TWO



FFIN
E Y E W E A R

DESIGNED IN WALES
& MADE IN ITALY

FOR THE REBELLIOUS
AR GYFER Y GWRTHRYFELGAR
PER I RIBELLI
PARA LOS REBELDES
POUR LES REBELLES
FÜR DIE AUFSÄSSIGEN
GIA TOUS EPANASTÁTES
ZA BUNTOVNITSITE
ZA POBUNJENIKE
PRO VZPURNÉ
TIL DE OPRØRSKE
VOOR DE OPSTANDIGE
MÄSSULISTELE
KAPINALLISILLE
A LÁZADÓKNAK
DO NA HAGHAIDH ÉIRÍ AMACH
PANHANGJEOG-IN SALAMDEUL-EUL WIHAE
AR DUMPINIEKIEM
UŽ MAIŠTININKUS
GHALL-RABBLIČI
DLA BUNTOWNIKÓW
PARA OS REBELDES
HANGYAKU-SHA NI TOTTE WA
DUÌYÚ PÀNNÌ ZHĚ LÁI SHUŌ
PENTRU REBELII
PRE REBELOV
ZA UPORNIKE
FÖR DE REBELLISKA
VIR DIE REBELSE
NAM REBELLIS

New Collection

Made from
{Bioacetate}



E

PAST PRESENT & FUTURE
CONVERGE

{ ERA }

TIMELINES

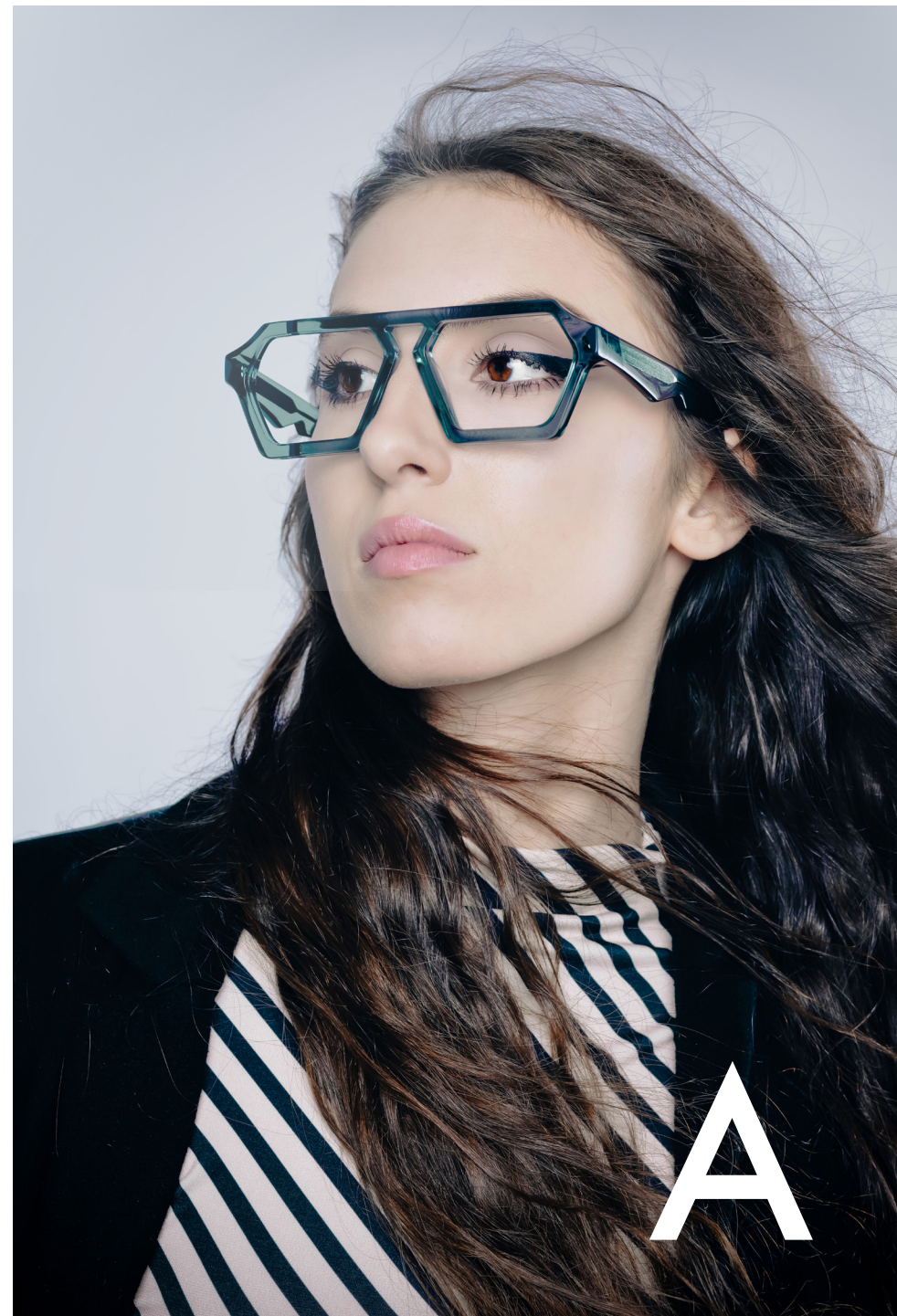
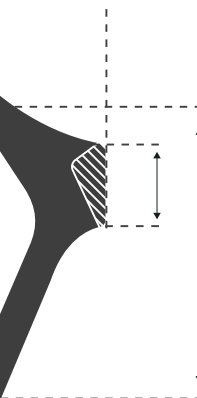
{ ERA }

TIMELINES

CONVERGE

{ ERA }

R



A

{ ERA } Timeline

{ ERA } Taimu rain
{ ERA } Idővonal

{ ERA } Llinell Amser
{ ERA } Chronologie

{ ERA } Zeitinie

{ ERA } Línea de tiempo

{ ERA } Linha temporal
{ ERA } Linha do tempo
{ ERA } Tijdslijn

{ ERA } Tidslinje
{ ERA } Aikajana

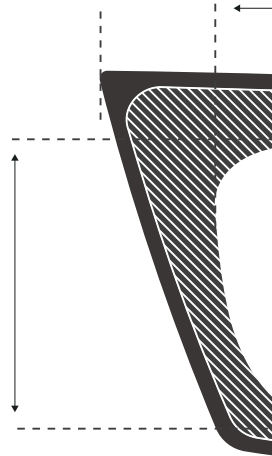
{ ERA } Shijīān xiàn

{ ERA } Chronologia

{ ERA } Linia czasowa

{ ERA } Časová osa
{ ERA } Vremenska crta





{ IFF }

IFF AND ONLY IFF
WHERE DO YOU DRAW THE LINE?

{ IFF }

CREAT I VITY

CUR I OSITY

INDIV I DUALITY

REBELL I ON

CONF I DENCE

INCLUS I VITY

SUSTA I NABILITY

ORIG I NALITY

I CONS

{ I F F }







E

{ AER }

R

R

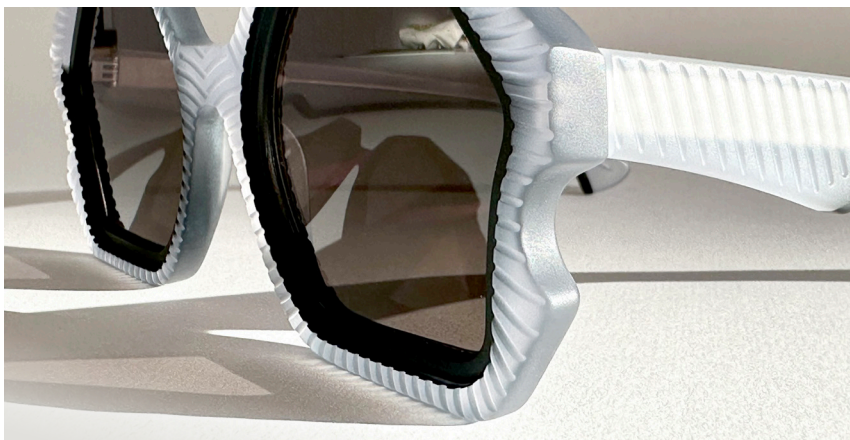
WELSH FOR AIR

A



R

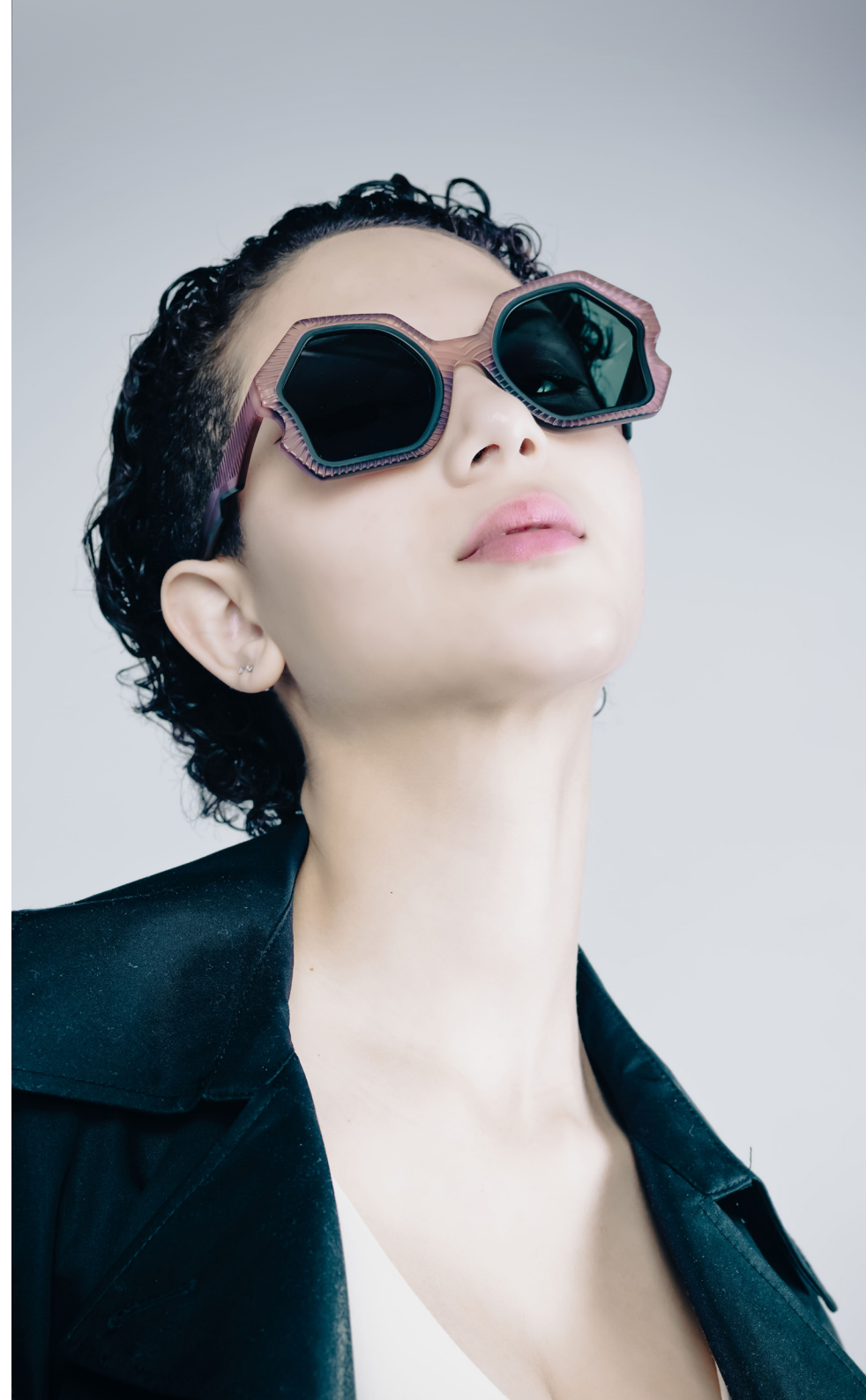
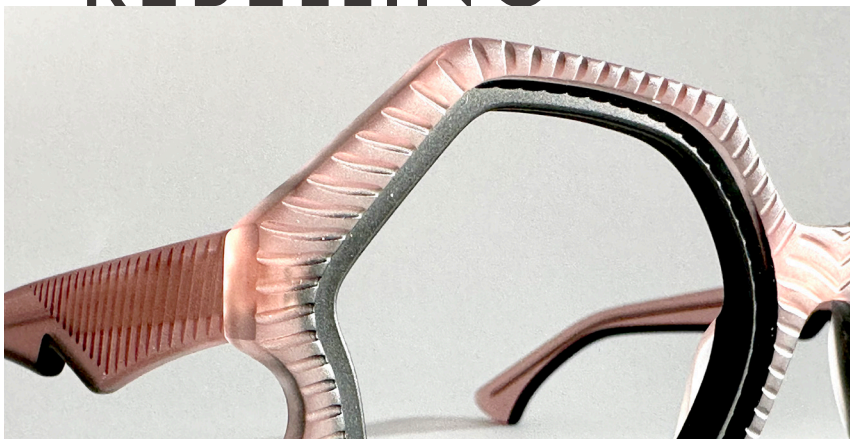




QUIETLY

{ AER }

REBELLING



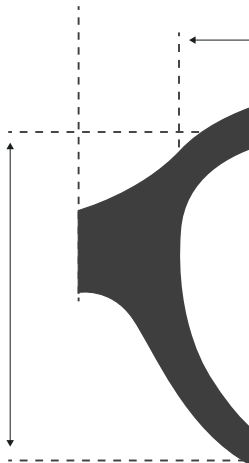


BOLD INDIVIDUALITY

BOLD INDIVIDUALITY

BOLD INDIVIDUALITY
BOLD INDIVIDUALITY

{ ANA }





REDEFINING

REDEFINING TRADITION

REDEFINING
TRADITION

{ ANA }







N

{ NOS }



O



A PERIOD OF DARKNESS
IN 24 HOURS



WELSH FOR NIGHT

WELSH FOR
NIGHT

A PERIOD OF DARKNESS

IN 24 HOURS

S



O

R



A

AT THE EDGE OF

INN OVATION

EXPL O RING

O PTIMISM

DISC O VERY

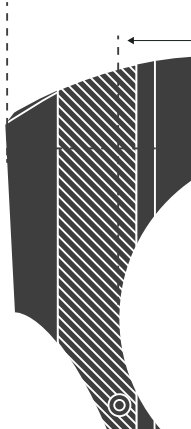
O PENNESS

B O LDNESS

J O Y

{ ORA }

{ LATIN FOR EDGE }



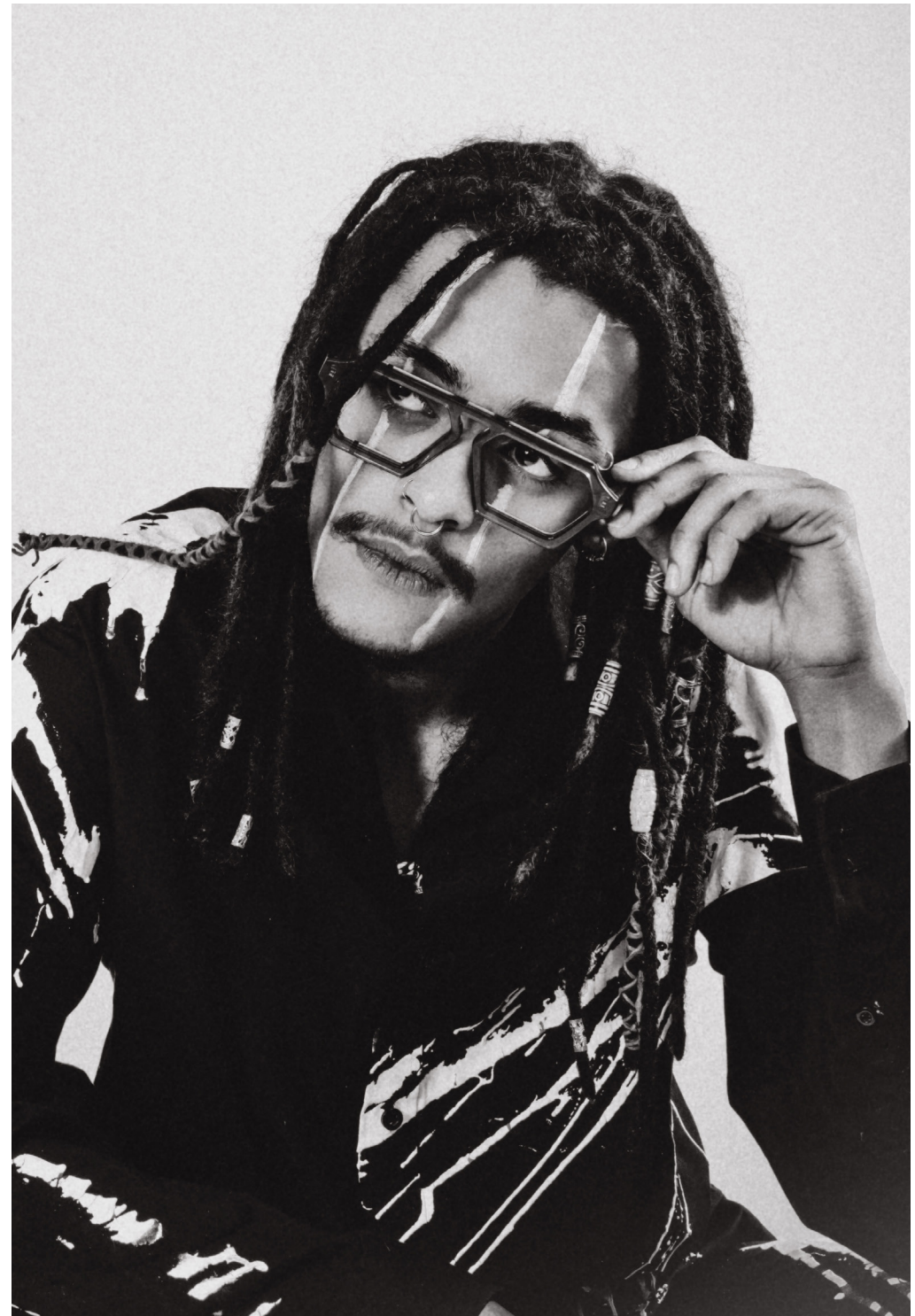
Ffin is a Welsh word that translates into border, boundary or frontier. The brand ethos is all about these defining lines, at the very edge of things. The lines we cross be they real or imaginary, tangible or invisible. There is always a hint of rebellion here, for wearers with a little bit of an edge. They are created for the adventurous spirits, the outsiders, the creative souls that are walking their own path in the world. For people that skirt the rules of the status quo, eyewear for the individual, classic with a wink.

F O R T H E
T R O U B L E
M A K E R S



@ffineyewear

To go beyond;
the boundary, the
border, the lines, the
edges, the limits, the
seasons. Crossing
all the lines.



DISTURPT
REALIGN

EDGE

Our product and brand emphasises sustainability throughout. The choice of ethical eco-friendly practices at every level is key to the way we work. This includes the frame, lens, packaging, shipping and the people in the process.

COLLIDE

LINE

FRONTIER

BRINK

BEYOND

Frames:

Mazzucchelli M49 Bio-Acetate

Lens:

Shades – Diver Green Line (40% vegetable origin, 60% recycled);
Optical - Fully recyclable blanks

Case:

Recyclable metal with organic fabric cover, recycled rPET interior

Accessories:

Organic fabric pouch,
recycled rPET lens cloth

Packaging:

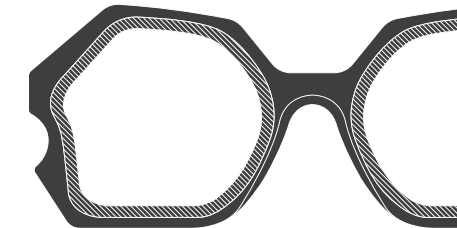
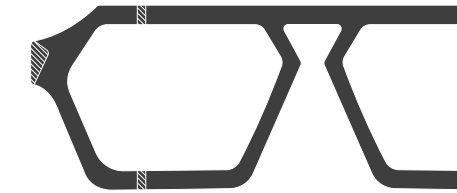
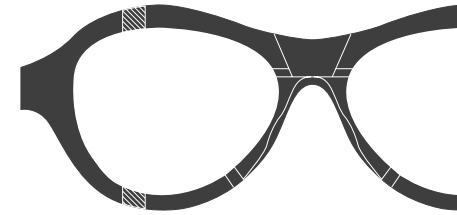
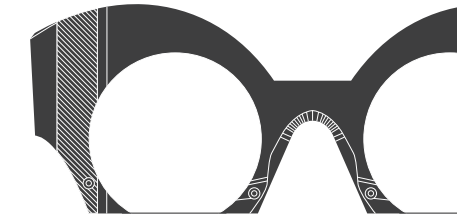
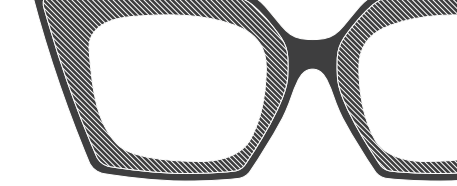
FSC, recycled materials,
eco printing

Shipping:

Environmentally conscious options

People:

Treated ethically





FFH

T H E R E
A R E
L I N E S
T O B E
~~C R O S S E D~~

WWW.FFINEYEWEAR.COM

FFIN